

# Guide Flexi-Fit

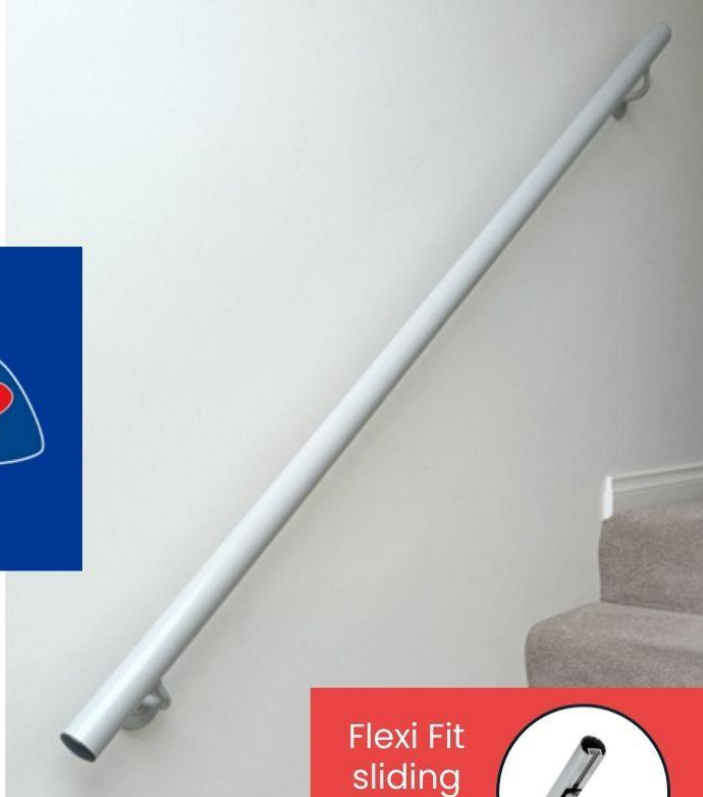
## Handrail Kit Set



Discover the versatility of our **NEW** robust powder coated aluminium handrail kit set.

- Clear instructions and easy assembly.
- Indoor and outdoor use.
- **Flexi Fit** sliding bracket system, allowing easy installation.
- Available in Silver Pearl and FlaxPod colours.
- New Zealand made.

Flexi Fit  
sliding  
bracket  
system



Outer packaging



Inside



# Guide Flexi-Fit

## Handrail Kit Set



W75 Bracket:  
Side of wall fixing  
included in kit set



### Product Information:

| Code      | Supplier | Product description                              |
|-----------|----------|--|
| A91HR17FP | Tetral   | Flexi-Fit Handrail Kit Set, 1700mm, FlaxPod      |
| A91HR17SP | Tetral   | Flexi-Fit Handrail Kit Set, 1700mm, Silver Pearl |

### Custom options:

#### Brackets



W60:  
Top of wall fixing



W75C:  
Side of wall fixing  
To be used on round,  
flat or wooden rails

#### Bends



Custom lengths, bends,  
brackets, and colours are  
available upon request.

Get in touch today to find out more information:  
[www.tetral.co.nz](http://www.tetral.co.nz)

**TETRAL**





# HANDRAILS

**Guide**<sup>®</sup>  
THE ENGINEERED HANDRAIL

## Guide Flexi Fit Handrail

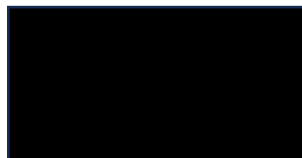
- Available in two diameters 32mm and 45mm- for indoor & outdoor settings
- Aluminium rail: rust free and durable
- Flexifit technology, a unique sliding bracket system allowing the fixing bracket to be positioned where suitable
- PVC insert on underside to assist grip and screws provided
- Meets building codes NZS 4121, NZS 4203, AS 1428.1, AS 1657, AS 1170.1



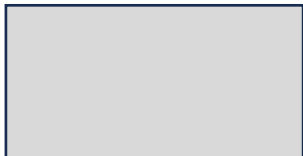
## Powder coated colours available:



Artic White



FlaxPod



Silver Pearl



Wood Grain



**Please get in touch so we can meet your requirements**

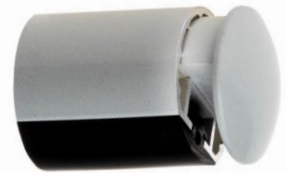
# HANDRAIL ACCESSORIES

**Guide**<sup>®</sup>  
THE ENGINEERED HANDRAIL

## Flexi Fit system



## End cap



## W75 Bracket



For side of wall fixing

## W60 Bracket



For top of wall fixing

## Handrail shapes

For change in height  
level



For bending around  
stairs



Handrails can be made to specification, powder coated in white, grey, black or a colour of  
zzzzzzyour choose. Contact us for more details.

# GRAB & SAFETY RAILS

**Guide**<sup>®</sup>  
THE ENGINEERED HANDRAIL



## Flexi Fit- Safety Grab Rail Straight

- Aluminium
- Rust free
- Durable
- Provided with stainless steel screws

### Sizes

1. 450mm- A91SR01W
2. 600mm- A91SR02W
3. 900mm -A91SR03W

## Flexi-Fit Safety Grab Rail with bend

### Sizes:

1. 600mm x 600mm with 45° bend- A91SR04W



- Aluminium
- Rust free
- Durable
- Sliding bracket system- offers flexibility in location when installing
- Provided with stainless steel screws

2. 750mm x 750mm with 90° bend - A91SR05W

